

ACE CORN BULB

IMPORTANT SAFEGUARDS

Warning: Please make sure the power is off before installation.

1. Turn off the power switch.
2. Unscrew the CFL or MHL or FIPS and so on. See Figure (5) (6).
3. Take out the LED corn light and screw on. See Figure (1) (2) (3) (4).

Figure (1) (2) (3) (4): AC internal driver

(Note: Please make sure to take off the ballast before installing the LED corn bulb. Otherwise, the ballast will produce a resonance of high voltage and make the LED corn light breakdown.)

4. If security rope is provided, please fix the rope on the lamp with hand; then fix the wire of other end on the shell. See Figure (2) (4).
5. The CCT and dimming of the lamp can be adjusted after removing the top plastic cover with a screwdriver. See Figure (5) (8).
6. Turn on the power switch (finished!).

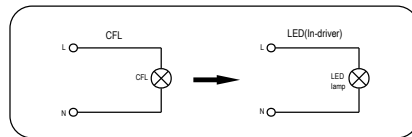
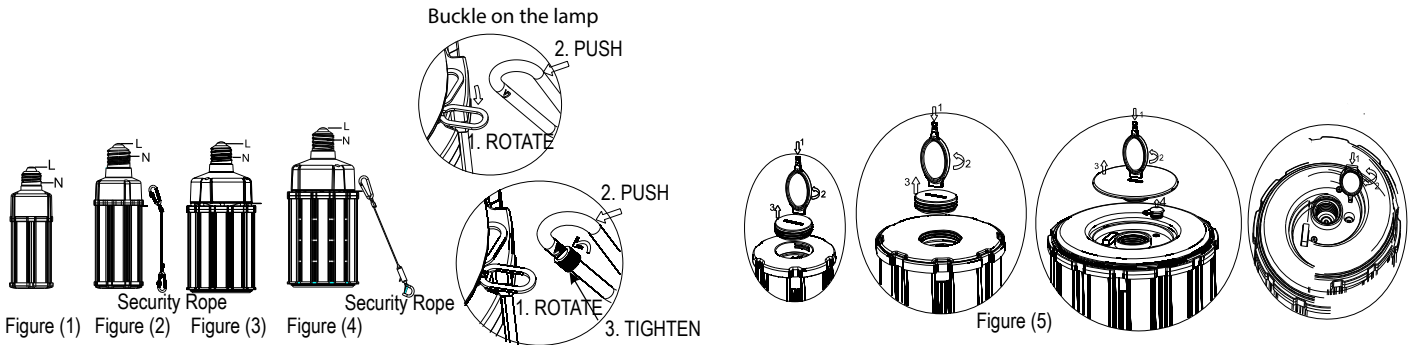


Figure (6)

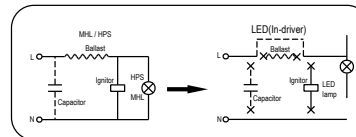
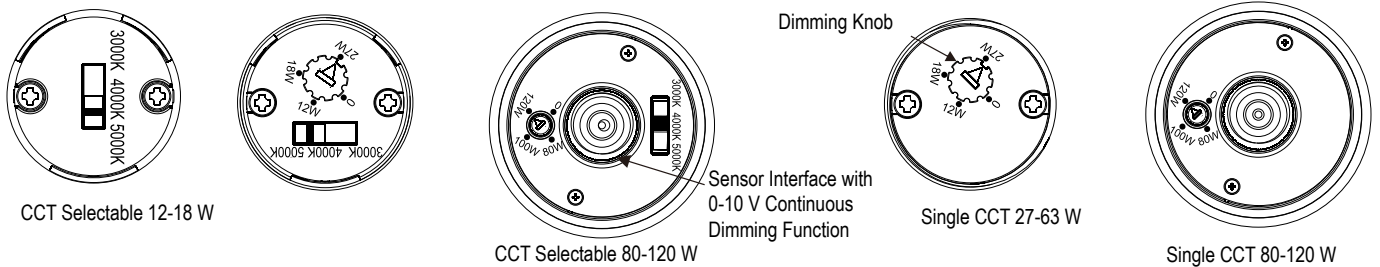


Figure (7)

CCT Selectable And Dimming Mode Diagram:

1. Continuous Dimming



2. Segmented Dimming

Rated Wattage	Dimming Mode		
27 W	12 W	18 W	27 W
36 W	18 W	27 W	36 W
45 W	27 W	36 W	45 W
54 W	36 W	45 W	54 W
63 W	36 W	54 W	63 W
80 W	54 W	63 W	80 W
100 W	63 W	80 W	100 W
120 W	80 W	100 W	120 W

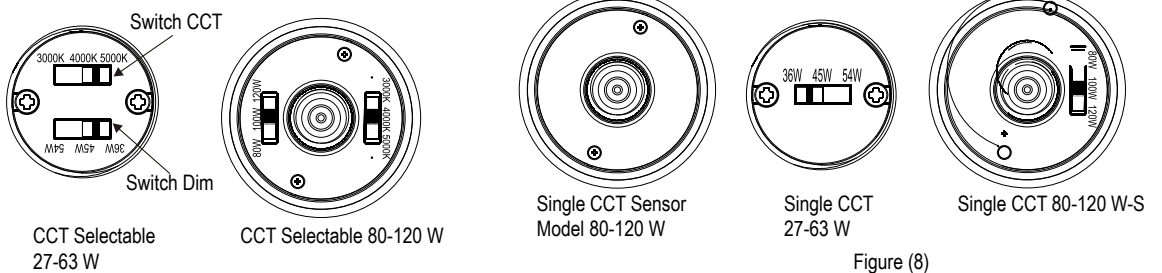


Figure (8)

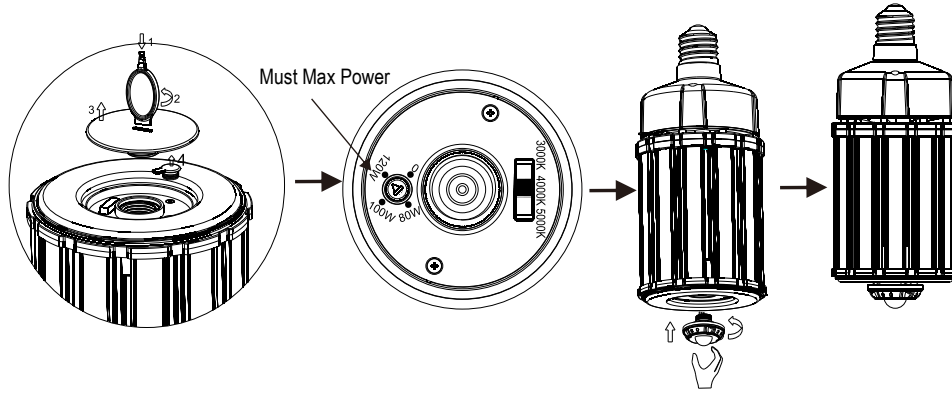
ACE CORN BULB

Installation of Motion Sensor or PIR Sensor

It could be easily installed by using a straight screwdriver. Use a flat-blade screwdriver to unscrew the plug and remove the plug. Then, adjust the luminaire's power to the maximum (otherwise the sensor will act abnormally). Install motion sensor or PIR sensor and tighten it.

Note: The motion sensor has no dialing code, and a remote control is needed for adjustment. Please refer to the instruction for remote control adjustment.

1. Continuous Dimming



2. Segmented Dimming

